

CORAL TRACE

A PLAT OF A PORTION OF SECTION 18, TOWNSHIP 46 SOUTH, RANGE 43 EAST
CITY OF DELRAY BEACH PALM BEACH COUNTY, FLORIDA

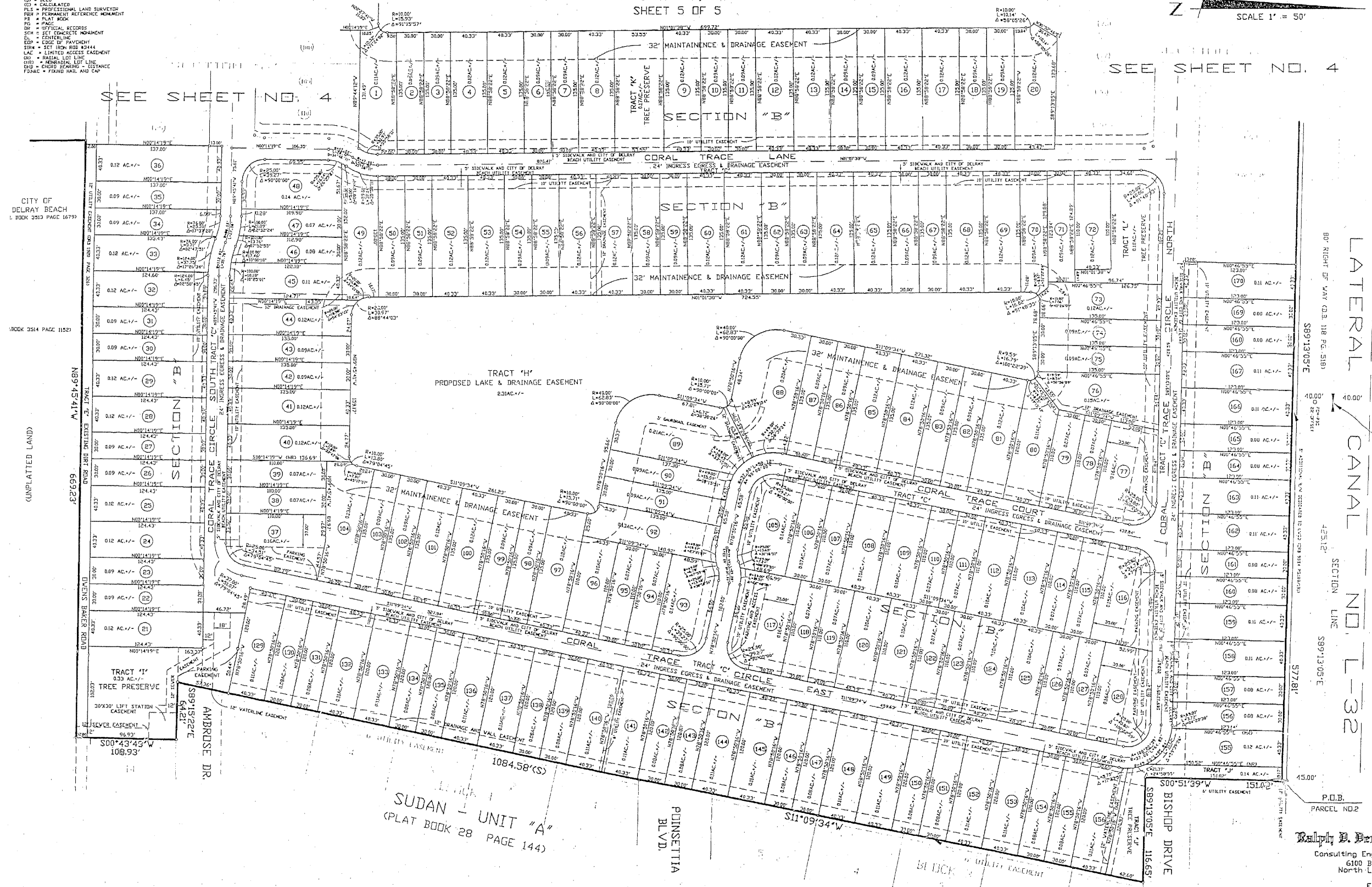
JANUARY 3RD, 1997
SHEET 5 OF 5

SCALE 1" = 50'

- LEGEND
- RADIUS
 - ∠ CENTRAL ANGLE
 - ARC LENGTH
 - BEIGHT OF WAT
 - DELTA ANGLE
 - SET P.M.
 - SET NAIL AND CAP
 - FOUND CONCRETE MONUMENT
 - FOUND IRON ROD
 - POINT OF BEGINNING
 - POINT OF COMMENCEMENT
 - PLAT
 - SURVEY
 - DEED
 - CALCULATOR
 - PROFESSIONAL LAND SURVEYOR
 - PERMANENT REFERENCE MONUMENT
 - PLAT BOOK
 - PAGE
 - OFFICIAL RECORDS
 - SET CONCRETE MONUMENT
 - CENTERLINE
 - EDGE OF PAVEMENT
 - SET IRON ROD MONUMENT
 - LIMITED ACCESS EASEMENT
 - RAILROAD LOT LINE
 - MEMORIAL LIST LINE
 - CHORD BEARING DISTANCE
 - FOUND NAIL AND CAP

SEE SHEET NO. 4

SEE SHEET NO. 4



CITY OF DELRAY BEACH
BOOK 2013 PAGE 16793

BOOK 2014 PAGE 1523

(UNPLATTED LAND)

TRACT 'E' EXISTING DR. ROAD
669'23"

DIENS BAKER ROAD

TRACT 'I' TREE PRESERVE
300'43'45" W
108.93'

TRACT 'J' TREE PRESERVE
300'51'39" W
151.03'

SUDAN UNIT "A"
(PLAT BOOK 28 PAGE 144)

PUNSETTIA BLVD.

BLOCK

BISHOP DRIVE

LATERAL CANAL NO. L-32
SECTION LINE

N1/4 CDR.
SEC.18-46S-43E

90' RIGHT OF WAY CDR. 118 PG. S181
S891305'E

4000'

42512'

S891305'E

57781'

4500'

P.O.B. PARCEL NO.2

PREPARED BY
Ralph B. Demuzis & Associates, Inc.
Consulting Engineers, Planners, Surveyors
6100 Boulevard of Champions
North Lauderdale, Florida 33068
(954) 969-5100
FAX (954) 969-9680